

FISHER & PAYKEL

FABRIC CARE SOLUTION

DRYER ON PLINTH INSTALLATION

DH9060H1, DH9060HG1, DH9060HL1, DH9060HLG1,
FM2060S1 and FM2060SG1 models

INSTALLATION GUIDE

CN

COMPONENTS REQUIRED

TOOLS

Supplied

- ☐ Spanner (dryer)
- ☐ Spanner (plinth)
- ☐ Allen key

Not supplied

- ☐ Box cutter
- ☐ Phillips screwdriver
- ☐ Level

PARTS

Supplied

- ☐ 1x Cold water hose
- ☐ 1x Hot water hose
- ☐ 1x Blanking cap
- ☐ 7x Plugs
- ☐ 4x M10 bolts
- ☐ 2x Plinth bolt hole covers
- ☐ 2x Dryer front brackets
- ☐ 2x Dryer rear brackets
- ☐ 2x Dryer rear mounting screws

Supplied (not required*)

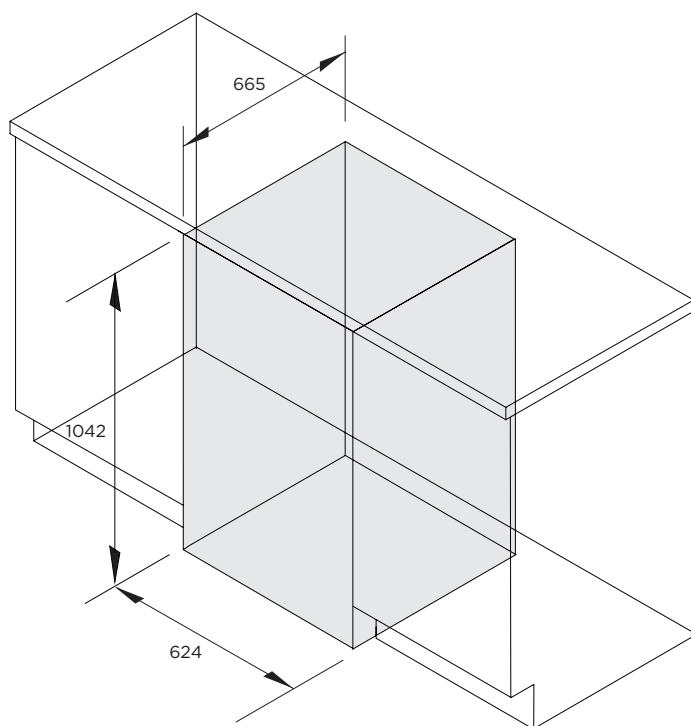
- ☐ 1x Communication cable

*Not required for single product installation.

ACCESSING YOUR PRODUCT SPECIFICATIONS



For full product, cabinetry and service specifications, refer to the Planning Guide. To access the Planning Guide, scan the QR code or visit fisherpaykel.com/cn/zh_CN/specify. Search by appliance type, product name or model code.



PRIOR TO INSTALLATION



fisherpaykel.com/cn/zh_CN/specify

1. Ensure cabinetry and servicing specifications have been met and clearances have been considered.

Refer to the Planning Guide for details.



2. Ensure floor is level and clear and a finished return has been created.



3. Ensure power will remain accessible following install to allow access for any future product maintenance.

Service holes should be smooth with grommets installed where required.

Refer to the services section of the Planning Guide for more details.

UNPACK



1. Cut the straps and the line printed on the top of the dryer carton. Lift to remove. Discard braces and corner posts. Remove any packaging and accessories from the drum and base packer.

Dispose of packaging responsibly.



2. Cut the straps and tape to open the plinth carton from the top. Remove the EPS cap before lifting the plinth out.

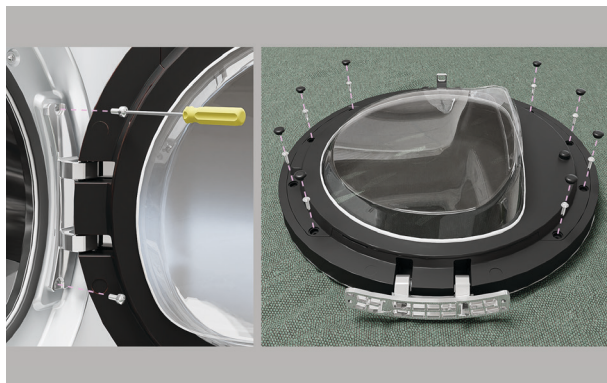
Set cardboard aside for later use. **Ensure accessories are removed from the EPS cap before discarding EPS and rubber spacers responsibly.**



3. Protect flooring before positioning dryer as close to the installation location as possible, ensuring enough working room is left available.

REVERSE DOOR (OPTIONAL)

The dryer door has reversible hinge and latch fittings and can be switched to open to the left or right, as needed.



1. Unscrew hinge, remove door and place face down on a protected surface.

Remove plugs (x 8) from inner door flanges, then remove screws.



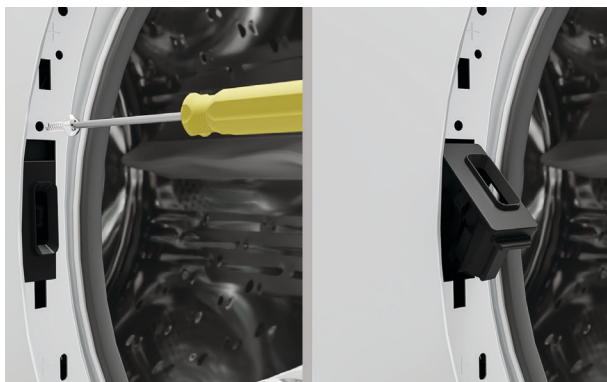
2. Insert flat-head screwdriver in access slot to pry off inner door. Rotate door 180 degrees and fit back in place.

Reattach screws, alternating between sides of the door. Replace plugs.



3. On dryer, unscrew and remove latch cover to access latch.

REVERSE DOOR (OPTIONAL)



4. Unscrew latch, and slide to remove.



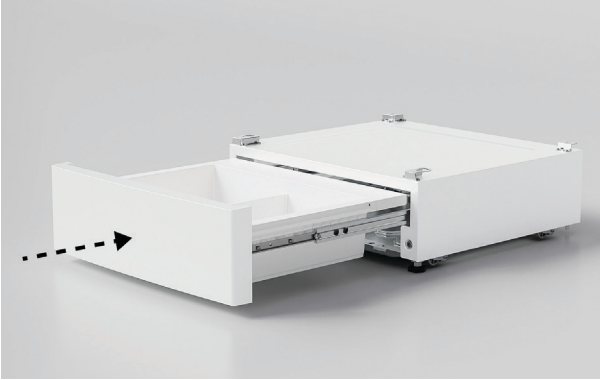
5. Rotate latch and insert on opposite side of dryer. Secure with screw.

Refit and secure latch cover with latch cover screws.

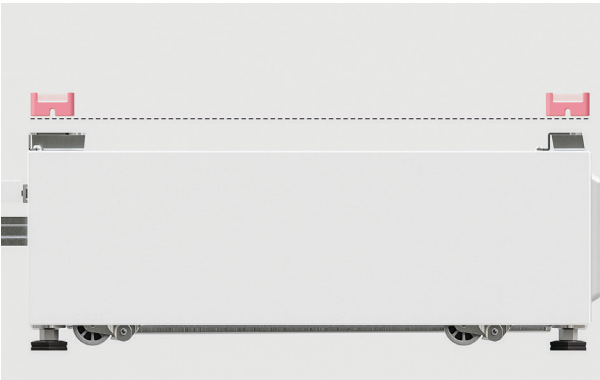


6. Refit door hinge and secure with hinge screws.

LEVEL PLINTH



1. Push the front of the plinth to open. Remove the divider before closing the drawer.



2. Place the plinth in its final install location. Adjust the feet using the supplied spanner until the plinth is level front to back and corner to corner.



3. Using the spanner provided, tighten the lock nuts against the base of the plinth to lock the feet in position.

Recheck that the plinth is level, front to back and side to side. Once level, move the plinth to an accessible location to allow washer/dryer to be installed.

FIT DRYER TO PLINTH



1. Remove the four pre-fitted plinth brackets using a Phillips screwdriver. Set screws aside for later use.

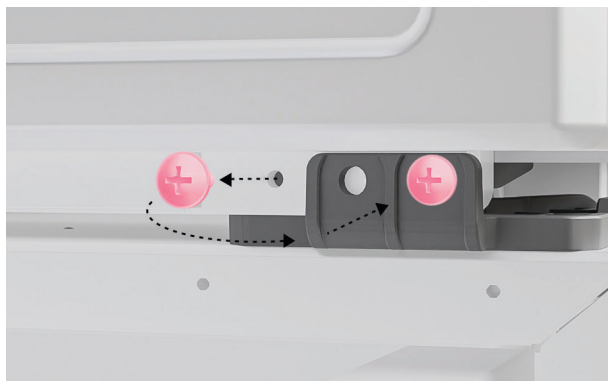


2. Fit the two supplied front dryer brackets using the screws removed in step 1.

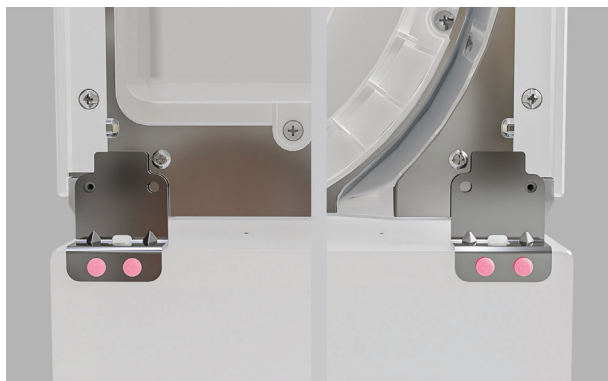


3. Lift the dryer onto the plinth and slot the front feet securely into the front plinth brackets. Ensure dryer and plinth are correctly aligned.

FIT DRYER TO PLINTH

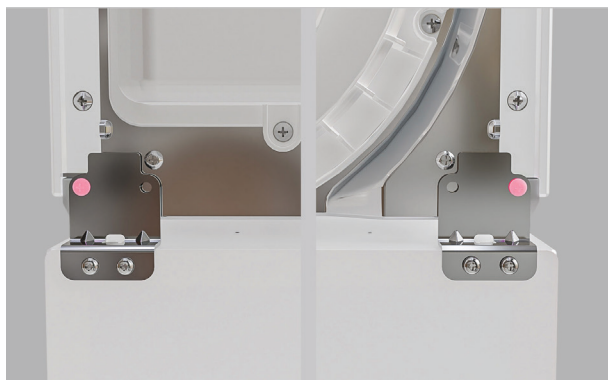


4. Remove the two screws from the front of the dryer and refit through the plinth



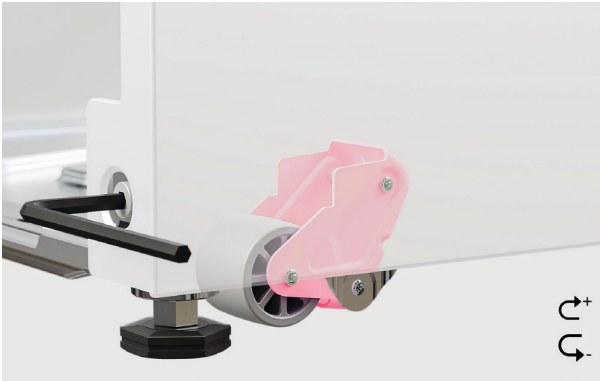
5. Fit the two supplied rear brackets to the plinth using the screws removed in step 1.

Set aside any remaining screws.

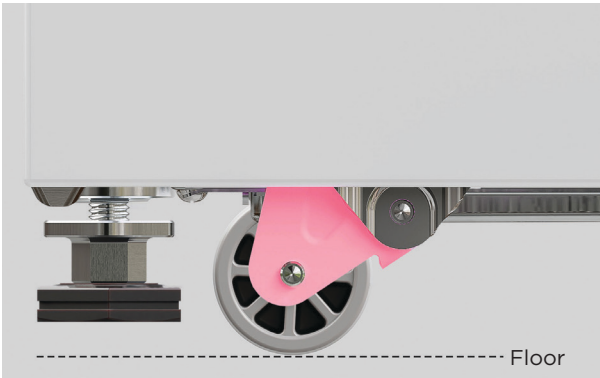


6. Using the two supplied long screws, secure the dryer to the plinth at the rear.

RAISE PRODUCT SET



1. Partially roll stacked products into alcove and check alignment. To do this, use the supplied 6mm hex key, rotate clockwise to lower both sets of wheels via the adjustment screws.



2. Ensure all feet are raised off the floor before rolling the plinth to the final install location.



3. Using the supplied 6mm hex key, rotate counter-clockwise to raise both sets of wheels via the adjustment screws.

Lower the wheels and remove product from alcove.

CONNECT CABLES AND HOSES



fisherpaykel.com/cn/zh_CN/specify

1. Refer to the Planning Guide for full service information.

Supply: 220 - 240V, 50Hz

Service: 10A

Outlet: 3-prong grounding-type

Supply: Hoses provided

Pressure: 50KPa (7psi) - 1MPa (150psi). Min 6 litres/min.



2. Optional:

Fit the drain hose extension if dryer can be connected to a drain.



3. Connect the angled end of the dryer cold hose to the dryer.

The washer and dryer cold hoses can be swapped if necessary.

CONNECT CABLES AND HOSES



4. Turn off cold water tap for washer, and undo washer cold hose at tap end.



5. Connect washer and dryer straight ends to the top of the supplied Y join.



6. Connect the dryer straight hose to the bottom of the Y join.

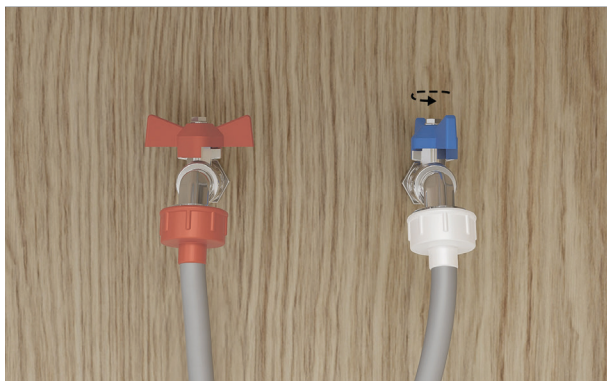
CONNECT CABLES AND HOSES



7. Partially push dryer and plinth into the alcove.



8. Route the power cables and hoses through service holes. Ensure power will remain accessible following install to allow access for any future product maintenance.



9. Connect the cold hose to cold water tap and turn tap on. If possible, recheck for leaks 24 hours after installation.

CONNECT CABLES AND HOSES



10A. Standpipe Installations

Route the drain hose through the guide and place into the standpipe.

Ensure a maximum of 20mm of the hose rests in the standpipe.



10B. Spigot Installations

Drill out blanking insert from the spigot.

Route the drain hose through the guide and place into the spigot. Secure using a hose pipe clamp.



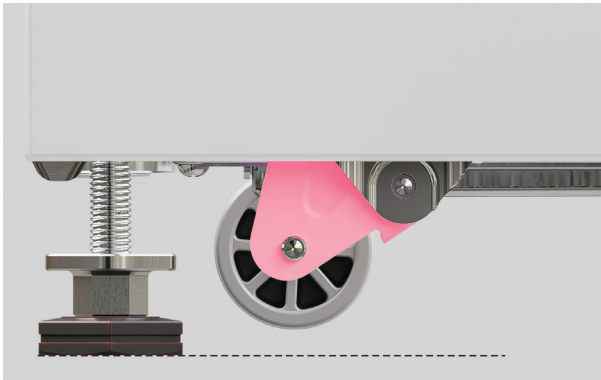
11. Connect the power cable and check product is powered on.

INSTALL DRYER



1. Push dryer into the alcove.

Take care not to damage hoses or cords.

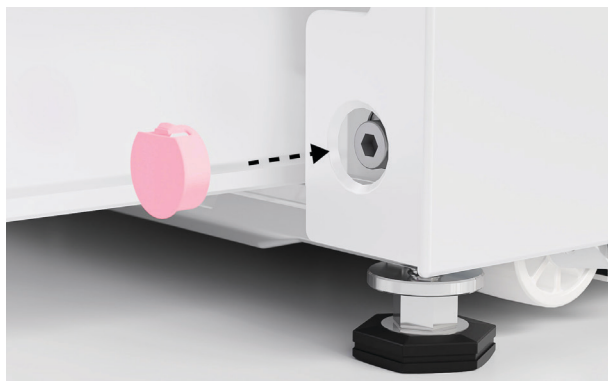


2. Turn the adjustment screw counter-clockwise to retract the wheels. **Ensure the wheels are fully raised off the floor.**



3. Check alignment and ensure required clearances are maintained. Adjust as required.

INSTALL DRYER



4. Once adjustment is complete, fit the plinth bolt hole covers.

FISHERPAYKEL.COM

© Fisher & Paykel Appliances 2024. All rights reserved.

The models shown in this guide may not be available in all markets
and are subject to change at any time.

The product specifications in this guide apply to the specific products and
models described at the date of issue. Under our policy of continuous product
improvement, these specifications may change at any time.

For current details about model and specification availability in your country,
please go to our website or contact your local Fisher & Paykel dealer.

431983A 01.24